

# Rödl & Partner

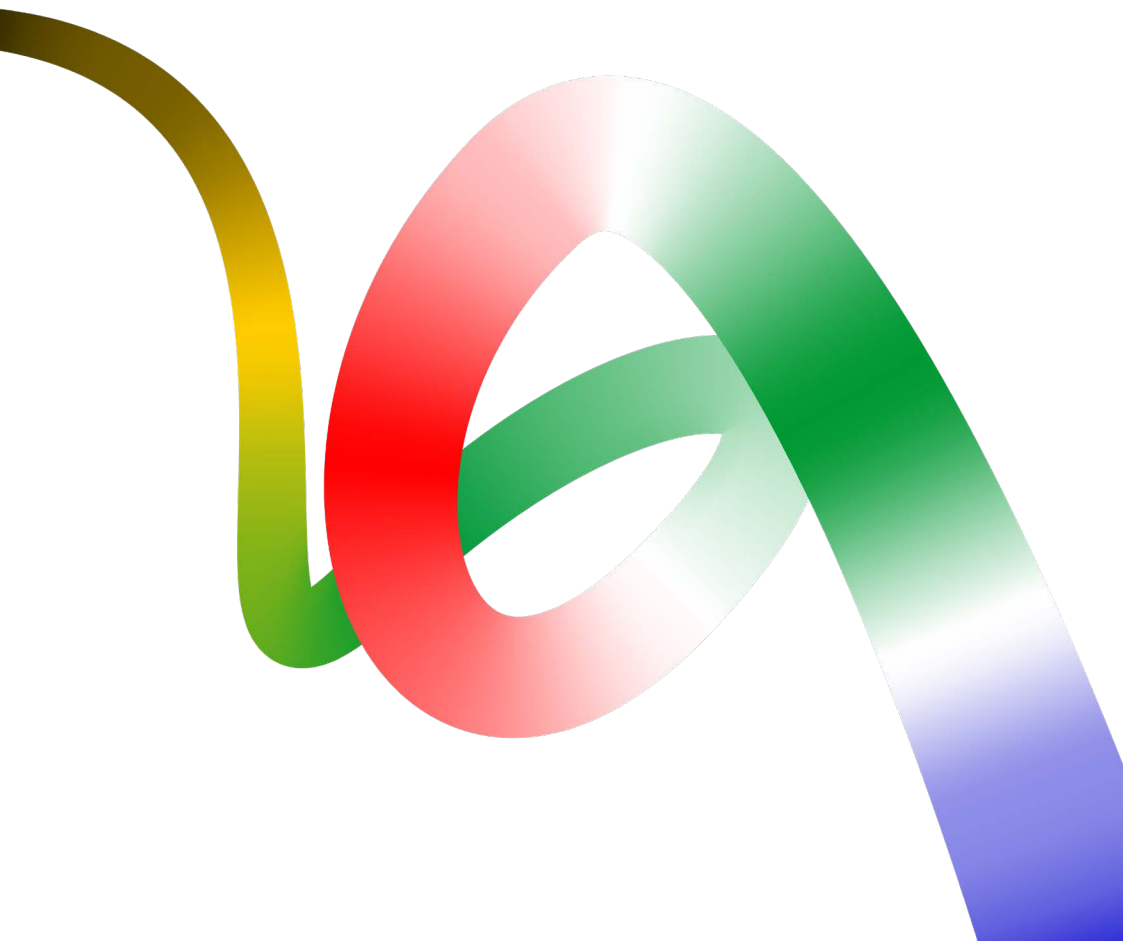
---

# Building confidence

---

SOUTH AFRICA

---



## Building confidence

---

”It does not matter what project is planned in the Republic of South Africa – when it comes to advice and assistance next to professional expertise, clients confide in a reliable partner. We are eager to prove that we are the optimum partner to have at your side. We will support you with our experience and professional competence throughout South Africa and across its borders.“

Rödl & Partner

# Rödl & Partner in South Africa

---

The Republic of South Africa (RSA) is a leading location for investments in the African continent. German companies have traditionally enjoyed a strong presence there for years. It was mainly driven by the automotive industry, mechanical engineering, industrial plant construction and mining. The South African market is an important springboard for German investments throughout Africa.

With the 2010 Football World Cup in South Africa, the country enjoyed even greater interest from German service providers and vendors. The German economy benefited at this point from its first-class reputation earned in the broadest possible range of technologies and service areas after the 2006 Football World Cup in Germany.

In 2008 Rödl & Partner opened an office in Johannesburg and integrated an independent South African audit firm Campbell Bode Brown into its global network for the purpose of providing audit services locally. At the beginning of 2009 another office was opened in Cape Town.

Thus Rödl & Partner has become one of the first German advisory and audit companies with a presence in South Africa. The team of experienced South African and German auditors, tax advisers and attorneys focuses on providing subsidiaries of German companies with the services of auditing annual financial statements, support during transactions as well as ongoing tax, legal and administrative support to their engagements in South Africa, ensuring German-speaking support and services from a single source.

The list of our clients includes large German automotive suppliers and mechanical engineering companies, technology suppliers from Germany, Austria and Switzerland that deliver equipment to the mining industry in South Africa and the neighbouring countries. We also support companies active in the renewables, industry and trade sectors, as well as service providers active in all sectors.

# The South as a junction point in the African continent

---

From our offices in Johannesburg, Cape Town, Nairobi and Lagos, we advise our clients based in the Southern African Development Community countries, such as Angola, Botswana, Mauritius, Mozambique, Namibia, Zambia and Tanzania. Our reliable cooperation partners are also there for our clients in Northern, Western and Eastern African countries, such as Egypt, Algeria, Ghana, Morocco, Nigeria, Tunisia as well as Ethiopia. Through long-standing, close collaboration with our partners, we provide advisory and audit services to our clients in the African continent which as a growth region attracts more and more interest from European and non-European investors.



# Our services

---

From our offices in Johannesburg and Cape Town, our German-speaking professionals offer the following advisory services:

## LEGAL ADVISORY

- Establishment of companies, ongoing legal advice
- Central bank applications
- BEE advice
- Acquisitions and disposals of businesses, Legal Due Diligence
- Employment contracts, contracts for senior executives, litigations involving labour law issues
- Distribution law, license agreements
- Intellectual property protection (trademarks, designs, copyright)
- Real estate law
- Local Content advice
- Energy Law
- Public Procurement Law

## TAX ADVISORY

- Planning of national and international tax structuring
- Staff secondments
- Permanent establishment-related issues
- Support during tax audits carried out by tax authorities, representation in disputes before tax courts
- Tax return advice
- Tax Due Diligence

## AUDITING

- Audits of annual financial statements in accordance with local laws
- Auditing and compilation of annual financial statements in accordance with the German Commercial Code and IAS / IFRS and US-GAAP
- Support with controlling of shareholdings
- Interim Reporting
- Financial Due Diligence
- Internal audits

## BUSINESS PROCESS OUTSOURCING

- Financial accounting, mapping of charts of accounts to the accounting system of the parent company
- Payroll accounting, HR management
- Implementation of accounting software applications
- Reporting, controlling
- Cash Management

## ESTATES / WILLS

- preparation of wills
- formation of trusts
- deceased estates
- trust administration
- estate planning

# About us

---

As attorneys, tax advisers, management and IT consultants and auditors, we are present in 111 own locations in 50 countries. Worldwide, our clients trust our 4,900 colleagues.

The history of Rödl & Partner goes back to its foundation as a solo practice in 1977 in Nuremberg. Our aspiration to be on hand wherever our internationally-active clients are led to the establishment of our first, own offices, commencing with Central and Eastern Europe in 1989. Alongside market entry in Asia in 1994, the opening of offices in further strategic locations followed, in Western and Northern Europe in 1998, USA in 2000, South America in 2005 and Africa in 2008.

Our success has always been based on the success of our German clients: Rödl & Partner is always there where its clients see the potential for their business engagement. Rather than create an artificial network of franchises or affiliates, we have chosen to set up our own offices and rely on close, multidisciplinary and cross-border collaboration among our colleagues. As a result, Rödl & Partner stands for international expertise from a single source.

Our conviction is driven by our entrepreneurial spirit that we share with many, but especially German family-owned companies. They appreciate personal service and value an advisor they see eye to eye with.

Our 'one face to the client' approach sets us apart from the rest. Our clients have a designated contact person who ensures that the complete range of Rödl & Partner services is optimally employed to the client's benefit. The 'caretaker' is always close at hand; they identify the client's needs and points to be resolved. The 'caretaker' is naturally also the main contact person in critical situations.



We also stand out through our corporate philosophy and client care, which is based on mutual trust and long-term orientation. We rely on renowned specialists who think in an interdisciplinary manner, since the needs and projects of our clients cannot be separated into individual professional disciplines. Our one-stop-shop concept is based on a balance of expertise across the individual service lines, combining them seamlessly in multidisciplinary teams.

## WHAT SETS US APART

Rödl & Partner is not a collection of accountants, auditors, attorneys, management and tax consultants working in parallel. We work together, closely interlinked across all service lines. We think from a market perspective, from a client's perspective, where a project team possesses all the capabilities to be successful and to realise the client's goals.

Our interdisciplinary approach is not unique, nor is our global reach or our particularly strong presence among family businesses. It is the combination that cannot be found anywhere else – a firm that is devoted to comprehensively supporting German businesses, wherever in the world they might be.

# Contact

---

## ● JOHANNESBURG

1 Eastgate Lane, Bedfordview 2007  
PO Box 346, Bedfordview 2008  
Johannesburg

DIETER SOMMER  
Partner

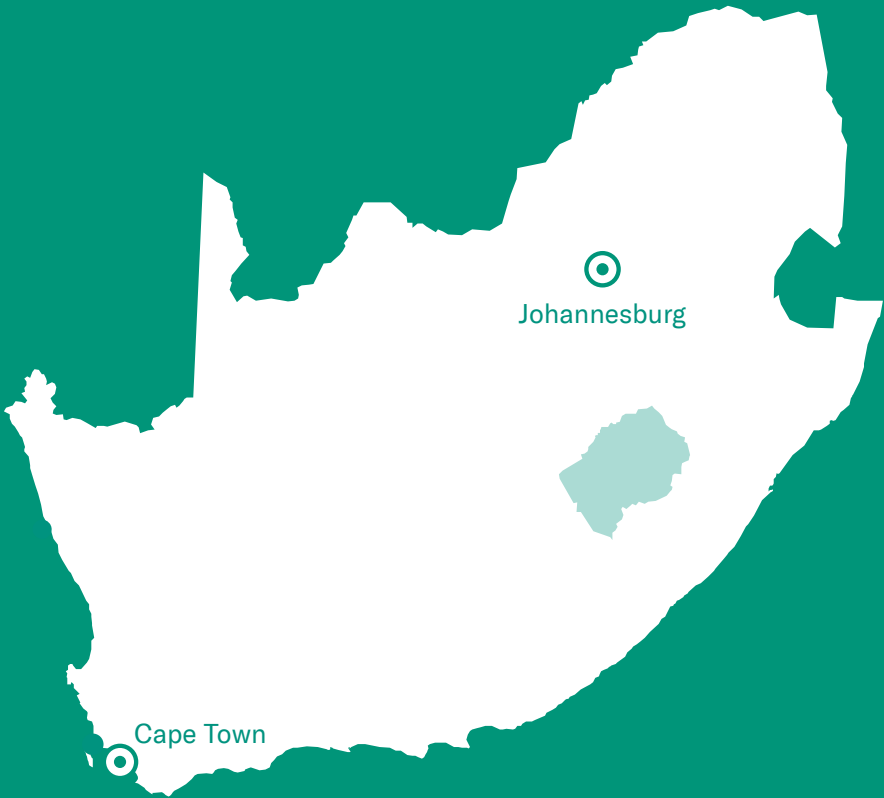
T + 27 11 4793 000  
johannesburg@roedl.com

## ● CAPE TOWN

Spaces Sunclare  
21 Dreyer Street  
Claremont  
Cape Town 7708

DIETER SOMMER  
Partner

T + 27 21 0133 552  
kapstadt@roedl.com



Visit us!

[www.roedl.com/south-africa](http://www.roedl.com/south-africa)